

# New HOPE Ministries

*Sharing Christ's love by meeting human needs*

## Remember this:

*Whoever sows sparingly will also reap sparingly, and whoever sows generously will also reap generously. Each of you should give what you have decided in your heart to give, not reluctantly or under compulsion, for God loves a cheerful giver. And God is able to bless you abundantly, so that in all things at all times, having all that you need, you will abound in every good work. As it is written:*

*"They have freely scattered their gifts to the poor; their righteousness endures forever."*

*Now he who supplies seed to the sower and bread for food will also supply and increase your store of seed and will enlarge the harvest of your righteousness.*

*You will be enriched in every way so that you can be generous on every occasion, and through us your generosity will result in thanksgiving to God.*

2 Corinthians 9:6-11

# Impact Update

## Fiscal Year 2023 Annual Report

### Meet Edinah!

Edinah was one of six students in our spring 2023 Nurse Aide Preclinical Class. Funded by supporters of New Hope Ministries, this job training program prepares students with the knowledge and tools needed to jump into the medical profession and become a Certified Nursing Assistant (CNA), an entry-level and high-demand field in our region. Edinah successfully completed our class, then moved ahead to pass her two Nurse Aide state exams to earn her Nurse Aide Certification.

**"I'm thankful to New Hope Ministries for supporting me academically and financially by giving me this chance to accomplish my career and my dreams!"**

Because of Edinah's hard work and determination, and support and prayer from staff and volunteers at New Hope, she is now a CNA working in the medical field and earning a living wage!



**"Every Life Transformed!"**



# A Letter from our Leadership

When New Hope opened its doors 40 years ago in January 1983, our community was facing an economic recession, inflation crisis, and increasing numbers of people facing financial hardship. Thanks to the vision and leadership of our local churches, we were able to create a safe place for people to come for help with food, paying a bill, a touch of human kindness, and the encouragement of a sincere prayer and message of God's love. Fast forward to 2023, and the cost of basic needs like food and housing really made life hard for struggling families.

Since 1983, New Hope's reach has grown from one place of help to now having nine offices where people can come for help in times of need. Our commitment to that simple vision of being someplace for people to turn when times are hard remains unchanged. We are so grateful for the opportunities to care for our neighbors, to be the hands and feet of Jesus, and to see lives being changed!

In 2023, we chose to focus on a year of giving thanks; thanks for God's sustaining and leading, thanks for our dedicated and caring staff, thanks for an amazingly committed group of volunteers, thanks for incredibly generous supporters, and thanks for our fantastic partners. In this time of celebration and thanksgiving, this past year has been a challenging time for the people and communities we serve. We've all seen the increased costs for food, housing, energy, transportation, and other basic needs. In 2023 we've served a third more people and delivered 50% more help than the prior year. We don't see this trend slowing yet, and want to continue to be available to help our neighbors in the coming year.

Our faith leads us to offer help and compassion to those facing hunger, unemployment, and homelessness, and to go beyond physical needs to find solutions to these problems and hope for the future. This work involves education, accountability, and taking time to walk through the tough times to find lasting solutions. We know there are still nearby communities that lack services like New Hope



provides. In November 2022, we were privileged to open our newest service location in the Red Land area of northern York County. Pictured above is our first guest visiting Marketplace for fresh milk and produce. By year end, we're already serving nearly 1,000 people in need from that community. And in the not so distant future, we look forward to the opening of our next service location as part of a collaborative community partnership serving Spring Grove in southern York County.

In January 2023, New Hope collaborated with other non-profit agency leaders and organizations to discuss solutions to housing and transportation challenges in our community. This resulted in hiring two new Housing and Homeless Program Managers and expanding the role of our Transportation Manager. These positions help screen homeless and near homeless individuals and families for emergency housing assistance needs and support permanent housing solutions, and help people secure reliable transportation through vehicle repair, second-chance financing, and vehicle donations. This was just the beginning - thanks to everyone for your prayers and support for these expansion projects.

In the fall of 2022, New Hope was recognized by Harrisburg Magazine as Readers' Choice for Best Nonprofit Organization and Best Place to Volunteer.

**New Hope Ministries is a Christian social service agency that shows the love and hope of Christ by serving our neighbors in times of need and supporting their efforts toward stability.**



Then in the spring of 2023, Executive Director Eric Saunders received the Nonprofit Innovation Award from the Central Penn Business Journal for Excellence in Nonprofit Leadership. How well deserved for all our staff, supporters, and volunteers! New Hope received our reaccreditation from the Pennsylvania Association of Nonprofit Organizations (PANO) through their Standards for Excellence program that promotes nonprofit transparency and accountability, and we continue to be a 4-star rated nonprofit by Charity Navigator.

New Hope has been a success story in how a community comes together to care for its neighbors. Strong programs and accountability make our work a success, but one of the most important factors is our amazing volunteer force - people of all backgrounds and ages serving their neighbors. The pandemic really hurt our volunteer program numbers, but we give thanks for those who lent a hand during that time. Read more in the coming pages!

Over the past 40 years, everything we do has been inspired by the example of Jesus and the desire to make a difference in the lives of our neighbors. We know we can't do this work alone. Financial support makes our work possible. Finally, if you know someone who could use New Hope's help, please refer them to us!

God bless you!



Eric Saunders, Executive Director  
Natalie Wech, Board President

# 20,973

Individuals served (35% increase over FY22)



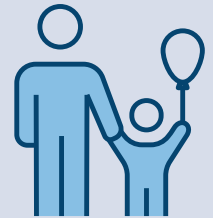
# 7,410

Families served  
(28% increase over FY22)



# 2,835

families received  
Christmas gifts,  
clothing, furniture,  
and more



Children who benefited  
from school backpack  
programs, summer day  
camp and more

# 1,244

# 1,555

received help with a job and  
educational programs



# 834

families received  
housing help (rent,  
mortgage, heat, utilities)



# 832

families received help with  
gasoline, car repairs, &  
vehicle donations



Pounds of Food  
Donated to New Hope:

# 3.4 Million

July 1, 2022 - June 30, 2023



# Celebrating 40

On January 3, 1983, New Hope Ministries opened its doors in Dillsburg, PA for the first time. Founding board member Marian Musser (in red sweater vest) and caseworker Linda DeCroes (in striped shirt) helped set the stage for four decades of serving the poor and needy in south-central Pennsylvania.



Founding board member Sally Ramirez designed New Hope's first logo - using the cross to symbolize our Christ-centered identity, and a butterfly as a symbol of hope and transformation. This logo was adopted by New Hope's board on January 18, 1983. There have been several revisions since, but the cross and butterfly are still front and center.



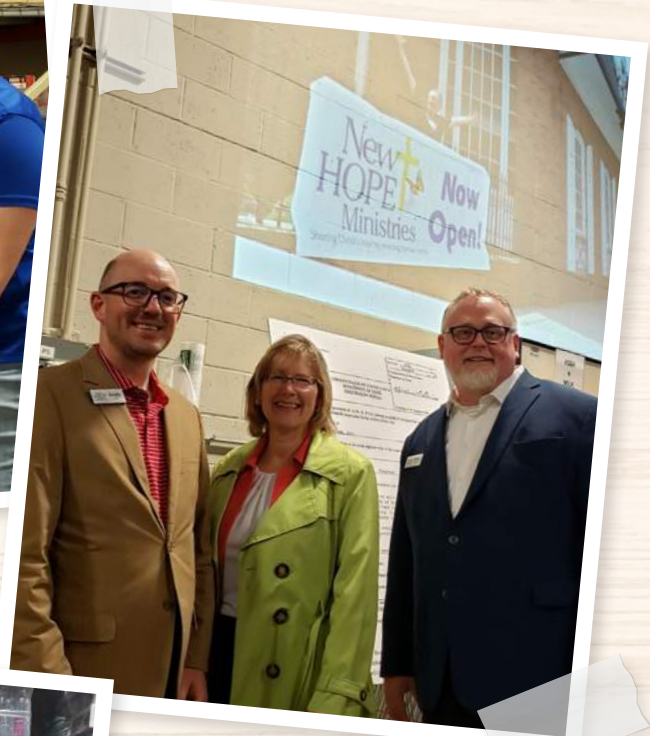
On November 1, 2022, founding board members and staff gathered with the community at today's Dillsburg Center to kick-off a year-long milestone celebration: (left to right) Founding staff members Linda DeCroes and Jolene Ness, founding board members Donna Bert, Marian Musser, and Ken Bert, and founding pastor and ministerium leader Reverend Charles Best.





# Years of Hope!

After the November 1st kick-off, more 40th Anniversary celebrations took place at our Red Land, Dover, Mechanicsburg, and Hanover Centers. Volunteers, guests, staff, and community members joined in our walk down memory lane, and learned about what's happening today and tomorrow in our continued mission to share Christ's love with our neighbors in need.



If you haven't already, scan this to read an in-depth article on our website written by Marian Musser about New Hope's founding.







Volunteers in FY2023:

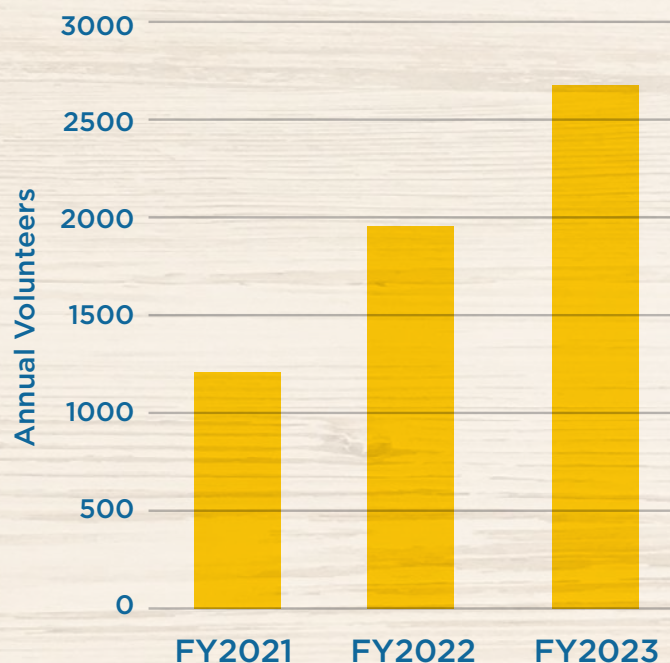
**2,599**

Volunteer Service Hours in FY2023:

**120,190**

## Giving Time

It shouldn't be a surprise that New Hope is consistently recognized in the community as a favorite place to volunteer. Whether five days a week or once a year, people generously give their time to make our mission move. And our data this past year has shown our volunteer program numbers recovering to pre-pandemic levels. We are so grateful for faithful volunteers being the hands of Jesus, touching the lives of our guests and showing them care.



## Dover Project Celebration

In July 2022, the Dover Center expansion and renovation capital project was officially completed! Community supporters and friends enjoyed a summer afternoon celebration together.



# Statement of Activities

Total revenues and other support	FY2022	FY2023
Cash Support	5,057,178	6,351,319
Noncash support	6,044,370	6,172,818
<b>Total revenues and other support</b>	<b>11,101,548</b>	<b>12,524,137</b>

Expenses and Losses		
Program services	9,639,583	11,068,168
Management and general	254,876	315,920
Fundraising	482,860	530,616
<b>Total expenses and losses</b>	<b>10,377,319</b>	<b>11,914,704</b>

Changes in net assets	724,229	609,433
-----------------------	---------	---------

Net Assets - July 1	9,764,511	10,488,740
Net Assets - June 30	10,488,740	11,098,173

**Nourishing  
Our Neighbors**  
(program services)

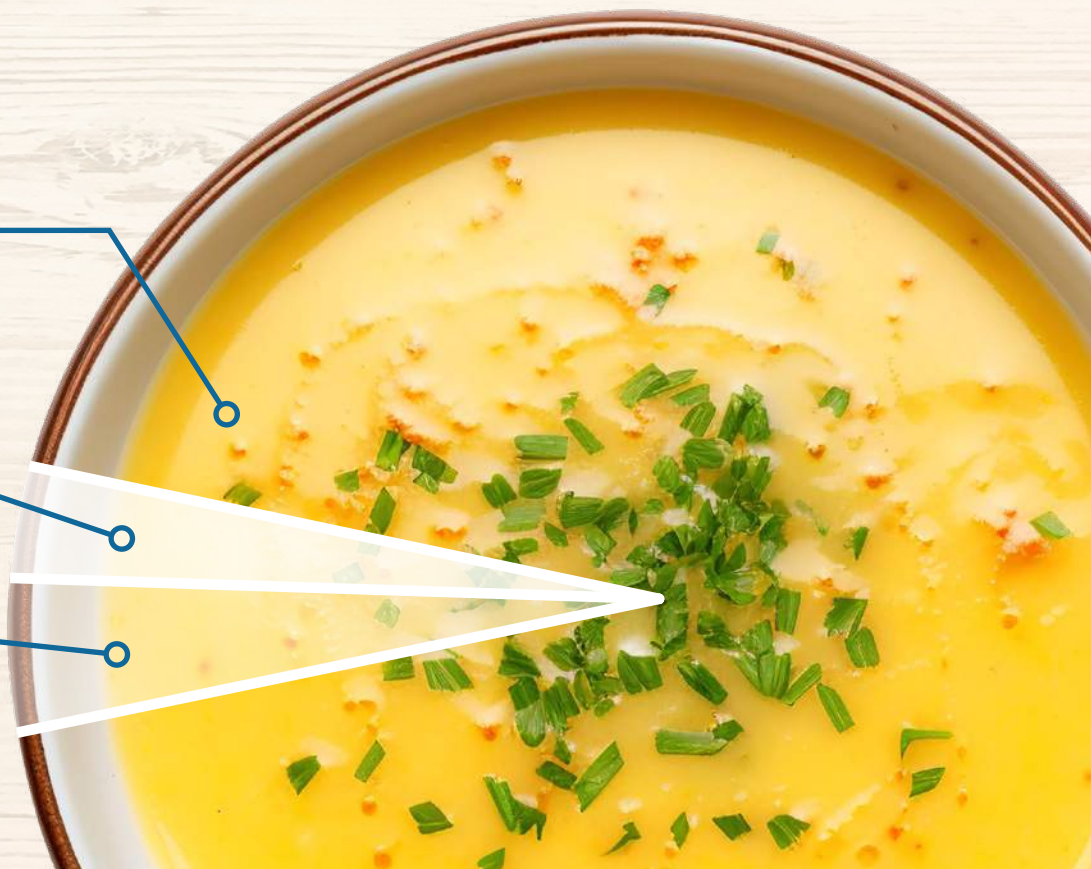
**93%**

Management & General

**3%**

Fundraising

**4%**





## Our Mission Field



### Administrative Office

99 W. Church Street  
P.O. Box 448  
Dillsburg, PA 17019  
(717) 432-2087  
info@nhm-pa.net

### Dillsburg Center

99 W. Church Street  
Dillsburg, PA 17019  
(717) 432-3053

### Dover Center

62 N. Main Street  
Dover, PA 17315  
(717) 292-3441

### Enola Center

110 Altoona Avenue  
Enola, PA 17025  
(717) 996-9006

### Hanover Center

135 Baltimore Street  
Hanover, PA 17331  
(717) 698-3365

### Littlestown Center

1113 Frederick Pike  
Littlestown, PA 17340  
(717) 848-0885

### Mechanicsburg Center

5228 E. Trindle Road  
Mechanicsburg, PA 17050  
(717) 766-7333

### New Oxford Center

154 Enterprise Drive  
New Oxford, PA 17350  
(717) 624-4700

### Red Land Center

539 Old York Road  
New Cumberland, PA 17070  
(717) 915-6763

### West Shore Center

701 Bosler Avenue  
Lemoyne, PA 17043  
(717) 774-6255

**Plus dozens of mobile  
pantry locations!**

## Board of Directors

### Natalie Wech

President

### Andrew M. Otto, CFP, CTFA

Vice President

### Kofi Odoom, MAcc, CRC

Treasurer

### Mark Halbruner, Esq.

Secretary

### Rev. Shawn Berkebile

Pastor Richard Cline

Patricia Devlin

Bruce Juergens

### Alex Kauffman

Jane Long

Maureen Neary

Tonia Reinert

## Management Staff

### Eric Saunders, MSW

Executive Director

### Sue Fornicola

Program Director

### Molly Helmstetter, CFRE

Director of Development

### Candy Benson

Housing & Homeless Program Manager

### Lisa Byrne

Stability Program Senior Manager

### Paul Dauenbaugh

Food Program Manager

### Jen Debinski

Employment Program Manager

### Pam Driscoll

Food Program Manager

### Victoria Ernest

Dover Center Manager

### Paul Eveler

Mobile Food Pantry Manager

### Amy Flores

Stability Program Manager

### Joanne Fortney

Enola Center Manager

### Don Heavner

Food Program Manager

### Teresa Hocker

Hanover Center Manager

### Tom Hunter

Food Program Manager

### Stephanie Kalmbach

New Oxford Center Manager

### Mike Kirkpatrick

Facilities Manager

### Betty Markle

Dillsburg Center Manager

### Noel Martinez

Housing & Homeless Program Manager

### Leah Miller

Business Manager

### Rick Roth

Transportation Program Manager

### Kevin Santiago

Stability Program Manager

### Christi Speck

Program Manager

### Gina Staton

Youth Program Manager

### Alyssa Sutowski

Mechanicsburg Center Manager

### Julie Swope

Youth Program Manager

### Megan Warren

West Shore Center Manager

### Leah Yingling

Littlestown Center Manager



[www.nhm-pa.org](http://www.nhm-pa.org)

