

My Next Step Plan







Contact Resource List

- PA211 Resources: 211, pa211.org
- NLC Intake: 717-240-0060
- United Way of Carlisle: 717-243-4805
- Mid-Penn Legal Services: 717-243-9400
- Contact Helpline: 1-800-932-4616, contacthelpline.org
- Community Cares: 717-249-1009, 50 W. Penn St, Carlisle, PA
- HUD: 1-866-683-5907, www.cchra.com
- Salvation Army: 717-249-1411, 24 E. Pomfret St, Carlisle, PA
- County Assistance Office: 717-240-2700, 33 Westminster Dr, Carlisle, PA Compass.state.pa.us
- Project Share: 717-249-7773, projectsharepa.org
- Cumberland County Mental Health Office: 717-240-6320
- Employment Skills Center: 717-243-6040, 29 S. Hanover St, Carlisle, PA
- PA CareerLink: 717-243-4431, 1 Alexandra Ct., Carlisle, PA
- Domestic Violence Services: 717-258-4249
- Some organizations are referral-based only. These are not included in this list

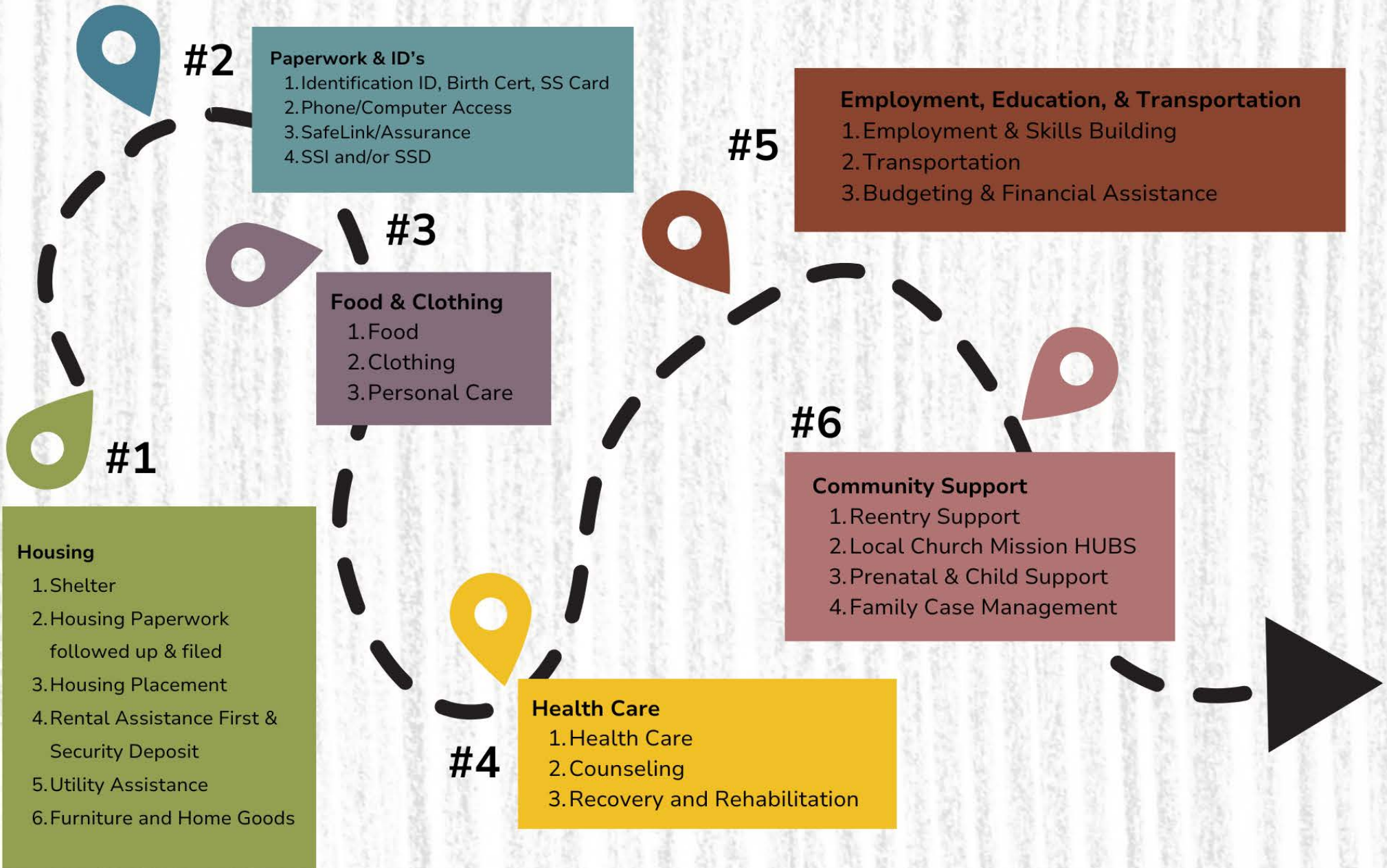


Community Needs RoadMap

Brought to you by
New Life Community

Carlisle, PA

Where are you on this map?



What's your next right step?

KEY for Case Managers - Community Needs Roadmap Carlisle

Step #1 Housing

1. **Shelter –**

Community Cares: 717-249-1009, 50 W. Penn St., Carlisle PA.

Safe Harbour: 717-249-2200, 102 W. High St., Carlisle PA.

Winter Emergency Shelter: 717-448-8850, 201 W. Louther St., Carlisle PA.

Domestic Violence Services: 1-800-852-2102

2. **Housing Application –**

Community Cares: 717-249-1009, 50 W. Penn St., Carlisle PA.

HUD: 1-888-683-5907

211: 211

3. **Housing Placement –**

HUD Case Managers: 717-249-1314.

Rental Resources and Packet: pahousingsearch.com

4. **Rental Assistance First & Security Deposit –**

CC Homeless Assistance Program: 717-240-7809 (with eviction notice).

Samaritan Fellowship: 333 Spring Garden Rd., Carlisle PA (Saturdays 7:45 - 10am).

Todd Baird Lindsey Devlin Foundation: 717-486-4121 (ages 55 and older).

Community Cares: 717-249-1009, 50 W. Penn St., Carlisle PA.

5. **Utility Assistance –**

PPL Electric: 1-800-342-5775 (Operation HELP).

UGI Gas: 717-234-5951 (CAP, LIURP, Operation SHARE).

LiHEAP: 717-240-2700.

Tri-County Community Action (OnTrack): 717-232-9757.

Project Lamplight: viewcentralpahouses.com/about/project-lamplight

Samaritan Fellowship: 333 Spring Garden Rd., Carlisle PA (Saturdays 7:45 - 10am).

6. **Furniture & HomeGoods –**

NLC LifeStyle: 717-240-0060, 64 E. North St., Carlisle PA.

Salvation Army: 717-249-1411, 24 E. Pomfret St., Carlisle PA (household items only).

Step #2 Paperwork & ID's

1. **Identification ID, Birth Cert, SS Card –**

State Homeless ID Program: DMV.org, 717-412-5300, 950 Walnut Bottom Rd., Carlisle PA.

Community Cares: 717-249-1009, 50 W. Penn St., Carlisle PA.

2. **Phone/Computer Access –**

Phones:

County Assistance Office: 717-240-2700, 33 Westminster Dr., Carlisle PA,
Compass.state.pa.us.

Assurance Wireless: assurancewireless.com

Computer Access:

PEEC Computer Lab: 223-212-5911, 219 N. Pitt St., Carlisle PA.

Bosler Memorial Library: 717-243-4642, 158 W. High St., Carlisle PA.

3. **SSI and/or SSD –**

Health Care Providers (individual care providers refer to SSD).

Social Security Office: 1-800-772-1213, 200 S. Spring Garden St., Carlisle PA.

Step #3 Food & Clothing

1. **Food –**

Project Share: 717-249-7773, projectsharepa.org.

Pomfret St. Outreach: 79 E Pomfret St., Carlisle PA (1st and 3rd Thurs).

Salvation Army: 717-249-1411, 24 E. Pomfret St., Carlisle PA.

2. **Clothing –**

Salvation Army Family Store: 717-706-3670, 469 E North St., Carlisle PA.

C-Luv Thrift: 717-448-4295, 20 N Hanover St. #102, Carlisle PA.

The Meeting House Clothing Closet: 717-243-1863, 1155 Walnut Bottom Rd., Carlisle PA.

3. **Personal Care –**

Salvation Army: 717-249-1411, 24 E. Pomfret St., Carlisle PA.

Community Cares: 717-249-1009, 50 W. Penn St., Carlisle PA.

Sadler Health: 1-866-SADLER, 100 N. Hanover St., Carlisle PA.

Step #4 Health Care

1. **Health Care –**

Sadler Health: 1-866-SADLER, 100 N. Hanover St., Carlisle PA.

County Assistance Office: 717-240-2700, 33 Westminster Dr., Carlisle PA,
Compass.state.pa.us

CAFLC (Carlisle Area Family Life Center): 717-243-1918, 155 N. Hanover St., Carlisle PA
(pregnancy care).

Cumberland County Aging Assistance: 717-240-6110

2. **Counseling –**

Cumberland County Mental Health Office: 717-240-6320

PA Counseling: 1-855-272-1653

In Him Christian Wellness (Counseling): 717-585-0627, 64 E. North St., Carlisle PA.

3. **Recovery & Rehabilitation –**

AA/NA Meetings: alcoholicsanonymous.com

JFT (Just for Today): 717-737-4145 (intake), Carlisle satellite location at 64 E. North St., Carlisle PA
jft-rvss.org (recovery and veterans services).

LifeStation: 717-240-0060, 64 E. North St., Carlisle PA

(faith-based recovery and trauma support group).

RASE Project: 717-249-6499 (recovery services and housing).

Step #5 Employment, Transportation & Budgeting

1. Employment & Skills Building –

PA CareerLink: 717-243-4431, 1 Alexandra Ct., Carlisle PA.

Employment Skills Center: 717-243-6040, 29 S. Hanover St., Carlisle PA.

TriCounty Community Action: 717-532-8611, 130 S. Penn St., Carlisle PA.

2. Transportation –

LifeCycle: 717-240-0060, 64 E. North St., Carlisle PA (bicycles).

His Hands Auto Repair: 717-258-5483, 730 N. College St., Carlisle (repairs).

Rabbit Transit: 1-800-632-9063, rabbittransit.org (for qualifying riders).

Tribe on a Quest: 717-370-9640, tribeonaquestpa.org
(employment transportation to and from specific locations).

Capital Area Transit: catransit.com (public bus system).

Salvation Army Social Services Office: 717-249-1411, 24 E. Pomfret St., Carlisle PA. (gas cards, bus passes for employment and medical appointments).

3. Budgeting & Financial Assistance –

Maranatha Carlisle: 717-258-1000, 20 N. Hanover St., Suite 202, Carlisle PA.

TriCounty Community Action: 717-532-8611, 130 S. Penn St., Carlisle PA.

M&T and Santander Banks: (contact your local branch if applicable)

Step #6 Community Support

1. Reentry Support –

Tomorrows Neighbors: 717-241-8375, tomorrowsneighbors.org

NLC LifeWorks: 717-240-0060, 64 E. North St., Carlisle PA (for community service).

CCARP (Cumberland County Adult Reentry Program): 717-240-6522
cumberlandcountypa.gov

2. Local Church Mission HUBS –

The Salvation Army: 717-249-1411, 20 E. Pomfret St., Carlisle PA.

New Life Community Church: 717-240-0060, 64 E. North St., Carlisle PA.

3. Prenatal & Children Support –

CAFLC (Carlisle Area Family Life Center): 717-243-1918, 155 N. Hanover St., Carlisle PA
(pregnancy and family support).

Childcare Consultants: 717-210-3334, childcareconsultants.org

Nurse Family Partnership at UPMC: 717-782-2335

Cumberland Cares for Families: 717-240-6172, 1100 Claremont Rd., Carlisle PA.

CYS “The Family Group”: 717-240-6120, 16 W. High St., Suite 200, Carlisle, PA
(discussion support group).

School Social Work Support Staff

4. Family Case Management –

Salvation Army Pathway of Hope: 717-249-1411 ext. 137

CAFLC: 717-243-1918, 155 N. Hanover St., Carlisle PA.